

SHINWA EXPRESS

Information

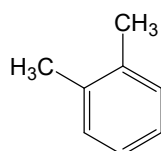
VOL. A24

ULTRON ES-CD-2 (L45)

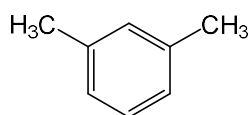
ULTRON ES-CD-2 is an up-graded version of ULTRON ES-CD with good scalability (5 μm and 3 μm).

NEW

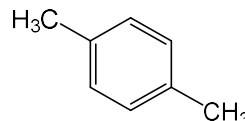
Scalability application



o-Xylene



m-Xylene

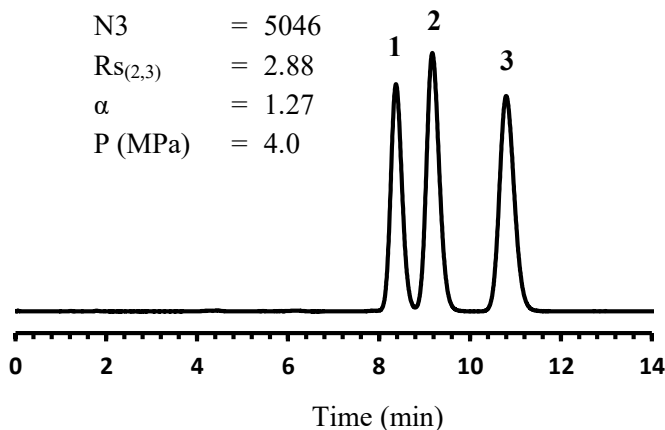


p-Xylene

1. o-Xylene
2. m-Xylene
3. p-Xylene

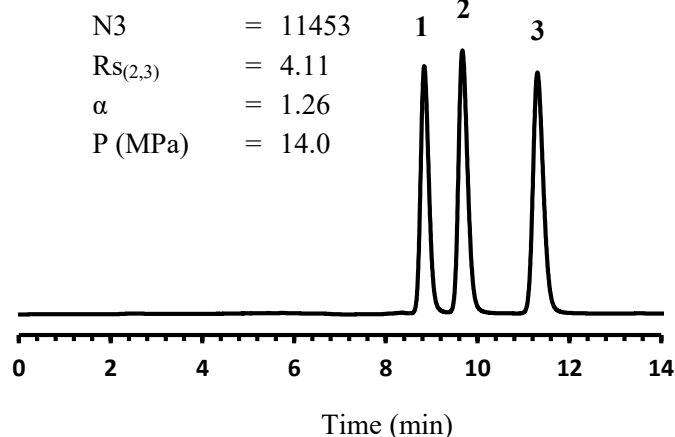
ES-CD-2 (5 μm)

N3 = 5046
 $R_{s(2,3)}$ = 2.88
 α = 1.27
 P (MPa) = 4.0



ES-CD-2 (3 μm)

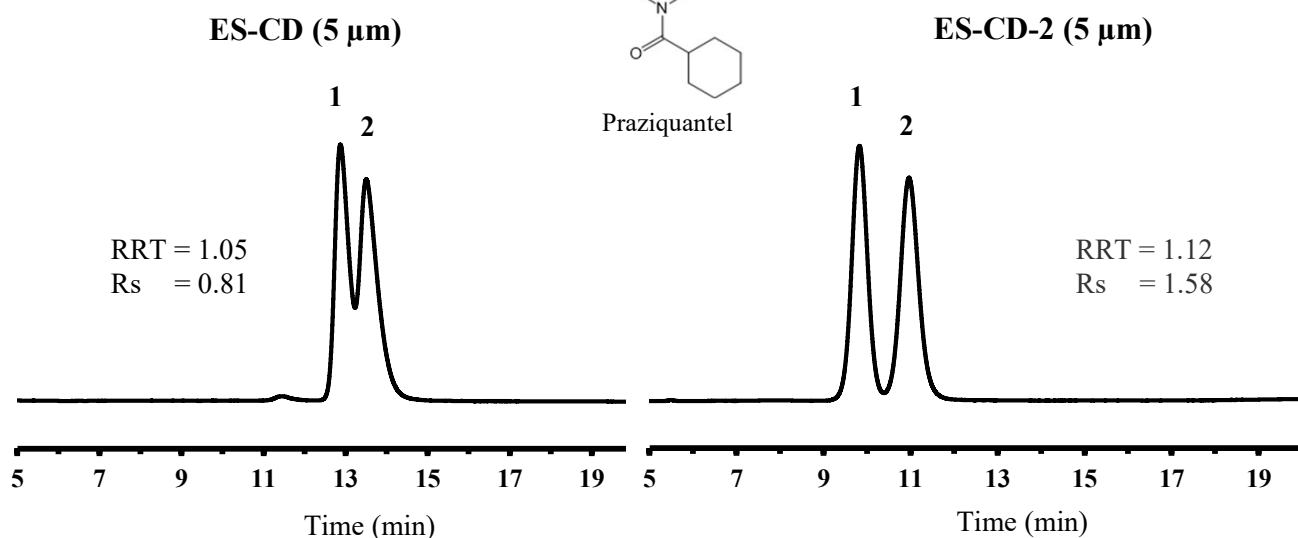
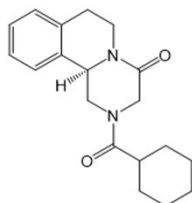
N3 = 11453
 $R_{s(2,3)}$ = 4.11
 α = 1.26
 P (MPa) = 14.0



Column: ULTRON ES-CD-2 (5 μm)
 ULTRON ES-CD-2 (3 μm)
 Column size: 150 mm L x 4.6 mm I.D.
 Mobile phase: $\text{CH}_3\text{OH}/\text{H}_2\text{O} = 50/50$
 Flow rate: 0.6 mL/min

Column temp.: 30°C
 Detection: UV-254 nm
 Sample: 1. m-Xylene
 2. o-Xylene
 3. p-Xylene
 Injection vol.: 10 μL

Application



※RRT(Relative retention time) = $Rt2/Rt1$

Column: ULTRON ES-CD (5 μ m)
 ULTRON ES-CD-2 (5 μ m)
 Column size: 150 mm L x 4.6 mm I.D.
 Mobile phase: CH₃CN/50mM HCO₂NH₄ (pH 3.6) = 20/80
 Flow rate: 0.7 mL/min

Column temp.: 45°C
 Detection: UV-230 nm
 Sample: Praziquantel
 Injection vol.: 2 μ L

■ Analytical column specifications ■

P/N	Product name	Particle size (μ m)	Column dimensions Length x I.D. (mm)
LCC-02221-151	ULTRON ES-CD-2	3	150 × 2.0
LCC-02221-153			250 × 2.0
LCC-02221-177			150 × 4.6
LCC-02221-179			250 × 4.6
LCC-02429-144	ULTRON ES-CD-2 (Two Guard Cartridges)		5 × 2.0
LCC-02429-171			10 × 4.6
LCC-01721-177	ULTRON ES-CD-EP		150 × 4.6
LCC-02231-151	ULTRON ES-CD-2		5
LCC-02231-153		250 × 2.0	
LCC-02231-177		150 × 4.6	
LCC-02231-179		250 × 4.6	
LCC-02439-144	ULTRON ES-CD-2 (Two Guard Cartridges) ※	5 × 2.0	
LCC-02439-171		10 × 4.6	
LCC-01631-179	ULTRON ES-CD-F	250 × 4.6	

Please do not hesitate to contact us for the other dimensions.
 Please feel free to contact us with questions related to analyses.
 Column screening services are also available.

Please be aware that specifications and prices are subject to change without prior notification.